

# Olathe South High School - Jazz Drumset Audition Material

An audition is required for placement on Drumset/Percussion in one of the jazz bands at Olathe South High School. The jazz courses offered are an extension of the general band curriculum and concurrent enrollment in a Band or Orchestra class is required except in rare circumstances.

Auditions must be done in person with Mr. Coughlin. You may contact him at [ccoughlinos@olatheschools.org](mailto:ccoughlinos@olatheschools.org) or at 913-209-4330 (cell) to schedule an audition. You will also need to complete one of the Select Ensembles Applications that can be found at <http://www.osbands.org/auditions>. **All auditions must be completed prior to Spring Break.**

## Audition Material

You will be asked to perform excerpts from three pieces along with a recording of each. The audio files for the three pieces can be found at <http://www.osbands.org/auditions>. There are two audio files for each song...one with drums being played as an example, and one with no drums in the audio. You will be asked to perform with the file that has no drums being played. The three songs are in different styles: swing, funk and Latin (specifically a Bossa Nova). If for some reason you have technical difficulties accessing and using the audio files, you will be allowed to perform a groove in those three styles, but weight will be given to auditions that are completed correctly along with the audio files. You will want to practice with the audio files frequently to get the feel of the music and to add fills and kicks appropriate to the chart.

Some notation is available for the swing and funk charts as a guide. There is not an actual chart for the Bossa Nova, but a page is included in this packet to assist with the style of the music. You will not necessarily be asked to perform the entire song...just enough to determine style, strength of pulse and rhythm and ability on fills and kicks.

**Swing** - the "quick chart" below shows the outline of *Swingin' Easy*. It is intended that the first 16 bars use the hi-hat for the swing pattern before switching to the ride. The "15 more" and "Play 16" refers to the number of measures to play. Please note the repeat at the end of the first line. The shout chorus should be played with a string back-beat. Use fills and kicks for the ensemble when appropriate.

## "SWINGIN' EASY"

The image shows a drum set chart for the song "Swingin' Easy" in 4/4 time. The chart is divided into two systems of notation. The first system starts with a key signature of one flat and a 4/4 time signature. It begins with a *mp* (mezzo-piano) dynamic and features a hi-hat pattern of quarter notes with eighth-note triplets. This is followed by a *mf* (mezzo-forte) section with a similar pattern. The first system ends with a double bar line and the instruction "15 more". The second system begins with a *mp* dynamic and is labeled "Sax solo Play 16". It features a *f* (forte) dynamic section with a similar pattern, followed by a *mf* section. The second system ends with a double bar line and the instruction "15 more".

# FUNK CHART

The notation above the staff indicates the rhythms in the ensemble. Use this to play appropriate kicks.

This is not the entire chart, but covers all you will be expected to play.

SWING FUNK  
♩ = 96

**(A)**

**(A)**

**(B)1** **(A)** **(B)1**

**(B)2** **(A)** LAST X

PLAY 1ST 10 BARS

**(B)1** **(A)** **(B)1** **(B)2** **(A)**

BASS & DRUMS

PLAY 3 BARS FILL BX

**Bossa Nova** - the info below is intended to help guide you and developing an appropriate pattern to play along with the audio file. You may vary the pattern and are not required to use a brush as indicated.

## - Bossa Nova Play-Along -

The first half of this song is played with a brush in your right hand, and a stick in your left hand. Play a basic 3-2 clave on the cross stick, with a brush pattern on the snare drum.

8 Bar Intro



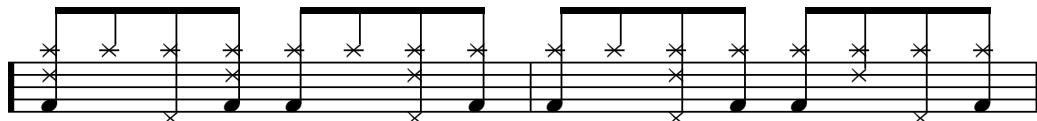
The piano melody is the same beat as the intro.

Piano Melody



When the guitar melody begins, grab a drum stick in your right hand and play the following beat on your hi-hat. This changes the feel a little.

Guitar Melody



The clave pattern changes for the bass solo from a 3-2 clave to a 2-3 clave. Make sure you play this softer and with closed hi-hats.

Bass Solo



The outro is played on the snare drum with shots on the second bar. Repeat this pattern until the end of the song.

Outro

