

# Fight Song

Flute/Piccolo

Ford/Moffit

Musical score for Flute/Piccolo. The score is written in G major (one sharp) and 2/4 time. It consists of five staves of music. The first staff begins with a dynamic marking of *f*. The second staff contains a first ending bracket labeled 'A'. The third staff contains a second ending bracket labeled 'B' and a dynamic marking of *fp*. The fourth staff contains a third ending bracket labeled 'C'. The fifth staff contains a fourth ending bracket labeled 'D'. The piece concludes with a final cadence.

# Fight Song

1st Bb Clarinet

Ford/Moffit

Musical score for 1st Bb Clarinet. The score is written in G major (one sharp) and 2/4 time. It consists of five staves of music. The first staff begins with a dynamic marking of *f*. The second staff contains a first ending bracket labeled 'A'. The third staff contains a second ending bracket labeled 'B' and a dynamic marking of *fp*. The fourth staff contains a third ending bracket labeled 'C'. The fifth staff contains a fourth ending bracket labeled 'D'. The piece concludes with a final cadence.

# Fight Song

2nd B♭ Clarinet

Ford/Moffit

Musical notation for the 2nd B♭ Clarinet part, measures 1-8. The key signature is B♭ major (two flats). The music begins with a dynamic marking of *f* (forte). The notation includes eighth and quarter notes with various articulations such as accents (^) and slurs.

Musical notation for the 2nd B♭ Clarinet part, measures 9-17. This section contains two first endings, labeled **A** and **B**. The key signature remains B♭ major.

Musical notation for the 2nd B♭ Clarinet part, measures 18-26. This section contains a second ending labeled **C**. A dynamic marking of *fp* (fortissimo piano) is present. The key signature changes to B♭ minor (three flats) at measure 27.

Musical notation for the 2nd B♭ Clarinet part, measures 27-33. This section contains a third ending labeled **D**. The key signature is B♭ minor.

Musical notation for the 2nd B♭ Clarinet part, measures 34-42. The key signature is B♭ minor. The notation includes various articulations and slurs.

# Fight Song

E♭ Alto Sax.

Ford/Moffit

Musical notation for the E♭ Alto Sax part, measures 1-8. The key signature is B♭ major. The music begins with a dynamic marking of *f* (forte). The notation includes eighth and quarter notes with various articulations such as accents (^) and slurs.

Musical notation for the E♭ Alto Sax part, measures 9-17. This section contains two first endings, labeled **A** and **B**. The key signature remains B♭ major.

Musical notation for the E♭ Alto Sax part, measures 18-26. This section contains a second ending labeled **C**. A dynamic marking of *fp* (fortissimo piano) is present. The key signature changes to B♭ minor at measure 27.

Musical notation for the E♭ Alto Sax part, measures 27-33. This section contains a third ending labeled **D**. The key signature is B♭ minor.

Musical notation for the E♭ Alto Sax part, measures 34-42. The key signature is B♭ minor. The notation includes various articulations and slurs.

# Fight Song

B♭ Tenor Sax.

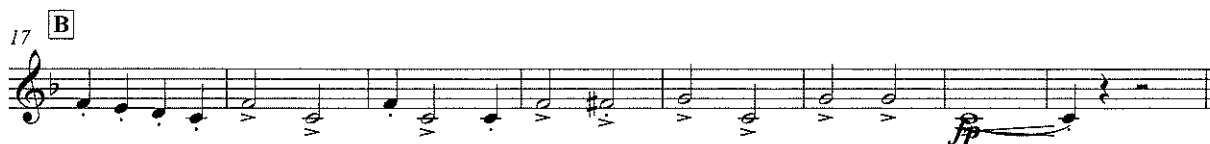
Ford/Moffit



# Fight Song

Baritone Saxophone

Ford/Moffit



# Fight Song

1st B $\flat$  Trumpet

Ford/Moffit

Musical notation for the 1st B $\flat$  Trumpet part, measures 1-8. The key signature is one flat (B $\flat$ ), and the time signature is common time (C). The music begins with a dynamic marking of *f* (forte). The notation includes various note values, rests, and articulation marks such as accents (^) and breath marks (v).

Musical notation for the 1st B $\flat$  Trumpet part, measures 9-17. This section is divided into two parts: **A** (measures 9-14) and **B** (measures 15-17). The notation includes various note values, rests, and articulation marks.

Musical notation for the 1st B $\flat$  Trumpet part, measures 18-26. This section is labeled **C** and includes a dynamic marking of *fp* (fortissimo piano) at measure 20. The notation includes various note values, rests, and articulation marks.

Musical notation for the 1st B $\flat$  Trumpet part, measures 27-33. This section is labeled **D** and includes various note values, rests, and articulation marks.

Musical notation for the 1st B $\flat$  Trumpet part, measures 34-40. This section includes various note values, rests, and articulation marks, ending with a double bar line.

# Fight Song

2nd B $\flat$  Trumpet

Ford/Moffit

Musical notation for the 2nd B $\flat$  Trumpet part, measures 1-8. The key signature is one flat (B $\flat$ ), and the time signature is common time (C). The music begins with a dynamic marking of *f* (forte). The notation includes various note values, rests, and articulation marks such as accents (^) and breath marks (v).

Musical notation for the 2nd B $\flat$  Trumpet part, measures 9-17. This section is divided into two parts: **A** (measures 9-14) and **B** (measures 15-17). The notation includes various note values, rests, and articulation marks.

Musical notation for the 2nd B $\flat$  Trumpet part, measures 18-26. This section is labeled **C** and includes a dynamic marking of *fp* (fortissimo piano) at measure 20. The notation includes various note values, rests, and articulation marks.

Musical notation for the 2nd B $\flat$  Trumpet part, measures 27-33. This section is labeled **D** and includes various note values, rests, and articulation marks.

Musical notation for the 2nd B $\flat$  Trumpet part, measures 34-40. This section includes various note values, rests, and articulation marks, ending with a double bar line.

# Fight Song

3rd B♭ Trumpet

Ford/Moffit



# Fight Song

F Horn

Ford/Moffit



# Fight Song

1st Trombone

Ford/Moffit

Measures 1-8 of the 1st Trombone part. The music is in bass clef with a key signature of two flats and a common time signature. It begins with a dynamic marking of *f*. The notation includes various note values, rests, and articulation marks such as accents and slurs.

Measures 9-17 of the 1st Trombone part. Measure 9 is marked with a box labeled 'A'. Measure 17 is marked with a box labeled 'B'. The music continues with similar rhythmic and melodic patterns.

Measures 18-26 of the 1st Trombone part. Measure 18 is marked with a box labeled 'C'. Measure 26 is marked with a box labeled 'D'. A dynamic marking of *fp* (fortissimo piano) is present at the beginning of measure 26.

Measures 27-33 of the 1st Trombone part. Measure 27 is marked with a box labeled 'D'. The music continues with similar rhythmic and melodic patterns.

Measures 34-40 of the 1st Trombone part. The music concludes with a final cadence.

# Fight Song

2nd Trombone

Ford/Moffit

Measures 1-8 of the 2nd Trombone part. The music is in bass clef with a key signature of two flats and a common time signature. It begins with a dynamic marking of *f*. The notation includes various note values, rests, and articulation marks such as accents and slurs.

Measures 9-17 of the 2nd Trombone part. Measure 9 is marked with a box labeled 'A'. Measure 17 is marked with a box labeled 'B'. The music continues with similar rhythmic and melodic patterns.

Measures 18-26 of the 2nd Trombone part. Measure 18 is marked with a box labeled 'C'. Measure 26 is marked with a box labeled 'D'. A dynamic marking of *fp* (fortissimo piano) is present at the beginning of measure 26.

Measures 27-33 of the 2nd Trombone part. Measure 27 is marked with a box labeled 'D'. The music continues with similar rhythmic and melodic patterns.

Measures 34-40 of the 2nd Trombone part. The music concludes with a final cadence.

# Fight Song

Baritone

Ford/Moffit

First line of musical notation for Baritone, measures 1-8. The key signature has two flats (B-flat and E-flat), and the time signature is common time (C). The music begins with a dynamic marking of *f* (forte). The notation includes eighth and quarter notes with accents and slurs.

Second line of musical notation for Baritone, measures 9-17. Measure 9 is marked with a boxed letter 'A'. Measure 17 is marked with a boxed letter 'B'. The notation continues with eighth and quarter notes, including accents and slurs.

Third line of musical notation for Baritone, measures 18-26. Measure 18 is marked with a boxed letter 'C'. Measure 26 is marked with a boxed letter 'D'. A dynamic marking of *fp* (fortissimo piano) is placed below the staff between measures 24 and 25. The notation includes eighth and quarter notes with accents and slurs.

Fourth line of musical notation for Baritone, measures 27-33. Measure 27 is marked with a boxed letter 'D'. The notation continues with eighth and quarter notes, including accents and slurs.

Fifth line of musical notation for Baritone, measures 34-40. The notation continues with eighth and quarter notes, including accents and slurs.

# Fight Song

Baritone TC

Ford/Moffit

First line of musical notation for Baritone TC, measures 1-8. The key signature has two flats (B-flat and E-flat), and the time signature is common time (C). The music begins with a dynamic marking of *f* (forte). The notation includes eighth and quarter notes with accents and slurs.

Second line of musical notation for Baritone TC, measures 9-17. Measure 9 is marked with a boxed letter 'A'. Measure 17 is marked with a boxed letter 'B'. The notation continues with eighth and quarter notes, including accents and slurs.

Third line of musical notation for Baritone TC, measures 18-26. Measure 18 is marked with a boxed letter 'C'. Measure 26 is marked with a boxed letter 'D'. A dynamic marking of *fp* (fortissimo piano) is placed below the staff between measures 24 and 25. The notation includes eighth and quarter notes with accents and slurs.

Fourth line of musical notation for Baritone TC, measures 27-33. Measure 27 is marked with a boxed letter 'D'. The notation continues with eighth and quarter notes, including accents and slurs.

Fifth line of musical notation for Baritone TC, measures 34-40. The notation continues with eighth and quarter notes, including accents and slurs.

# Fight Song

First musical staff, measures 1-8. Key signature: three flats (B-flat, E-flat, A-flat). Time signature: common time (C). Starts with a dynamic marking of *f*. The melody consists of quarter and eighth notes with various articulations like accents (^) and slurs.

9 **A**

Second musical staff, measures 9-16. Continuation of the melody from the first staff, ending with a double bar line.

17 **B**

Third musical staff, measures 17-24. Continuation of the melody, ending with a double bar line. Includes a dynamic marking of *ff* at the end.

25 **C**

Fourth musical staff, measures 25-32. Continuation of the melody, ending with a double bar line.

33 **D**

Fifth musical staff, measures 33-40. Continuation of the melody, ending with a double bar line. Includes an accent (^) over a note.



Snare Drum

# Fight Song

Ford/Moffit

Musical score for Snare Drum of 'Fight Song'. The score is written on a single staff with a treble clef and a common time signature (C). It begins with two triplet markings over the first six notes. The piece is divided into sections A, B, C, and D, each marked with a boxed letter. Section A starts at measure 8, B at 19, C at 26, and D at 33. The score includes dynamic markings: *f* (forte) at measure 26 and *p* (piano) at measures 19 and 38. There are also hairpins indicating crescendos and decrescendos.

Bass Drum

# Fight Song

Ford/Moffit

Musical score for Bass Drum of 'Fight Song'. The score is written on a single staff with a treble clef and a common time signature (C). It begins with two triplet markings over the first six notes. The piece is divided into sections A, B, C, and D, each marked with a boxed letter. Section A starts at measure 9, B at 17, C at 25, and D at 33. The score includes dynamic markings: *f* (forte) at measure 26 and *p* (piano) at measures 19 and 38. There are also hairpins indicating crescendos and decrescendos.